

INV TECHNICAL SHEET

No.	item	title	unit
S-S5-01 (1/8)	EMC	EMC Data	S500

This sheet shows typical EMC Data based on tests conducted using the EMC Installation Guidelines as shown in the S500 Instruction Manuals

【FR-S520】

《Condition》

The measurement condition : EN55011 and EN55022.

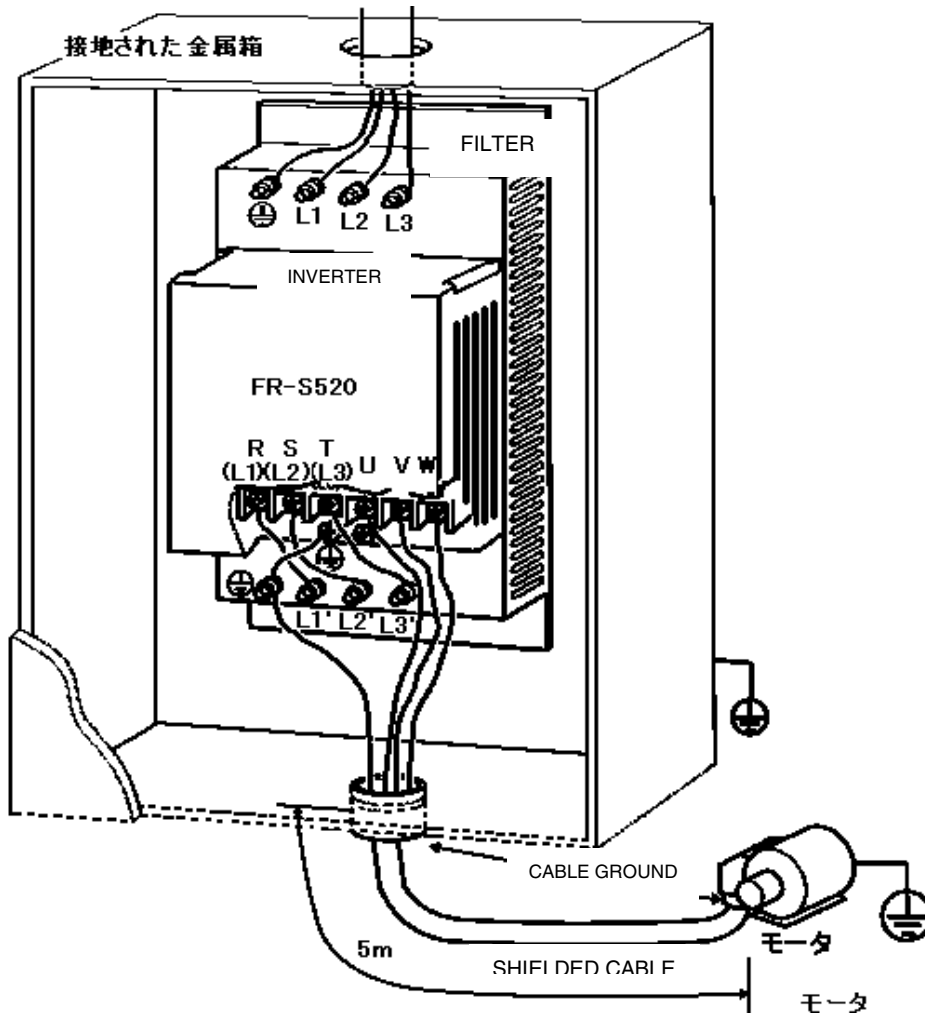
With cabinet

Cable length : 5m

Output frequency : 30Hz

Cable type : shield cable

Carrier frequency : 14.5KHz



Date		
2000-6-15		

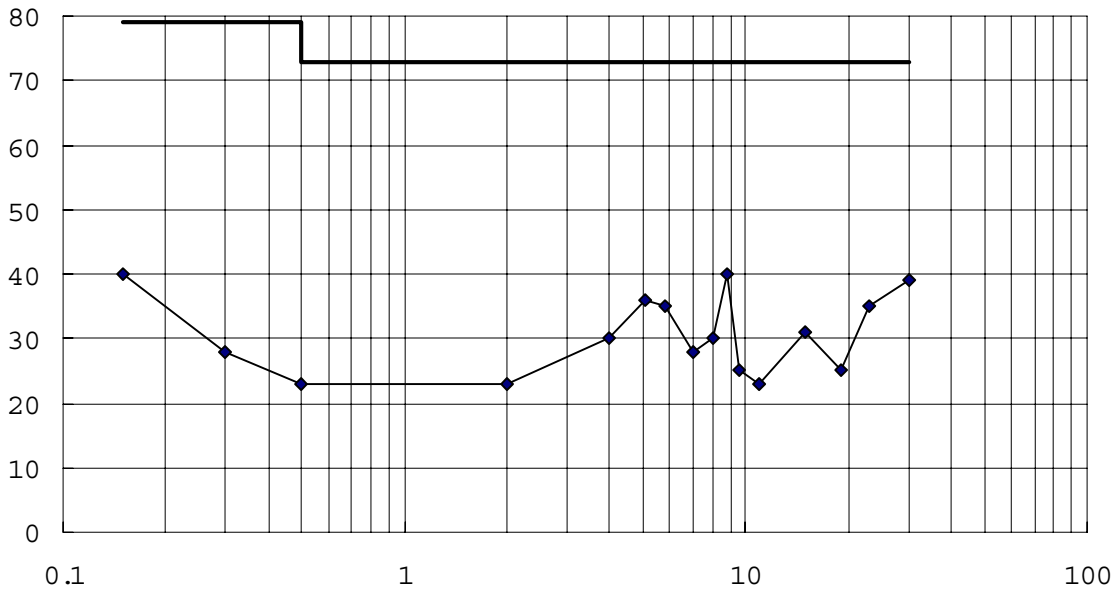
INV TECHNICAL SHEET

No.	item	title	unit
S-S5-01 (2/8)	EMC	EMC DATA	S500

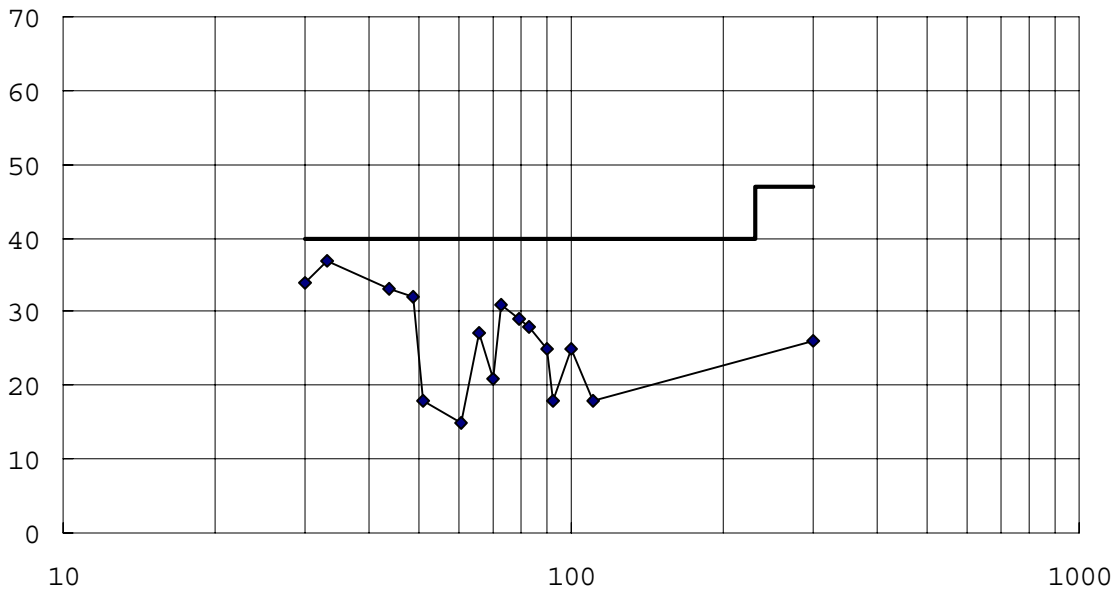
《Measurement Data》

• **FR-S520-0.1K + SF1306**

◎ Conducted Emission



◎ Radiated Emission (10m)



Date		
2000-6-15		

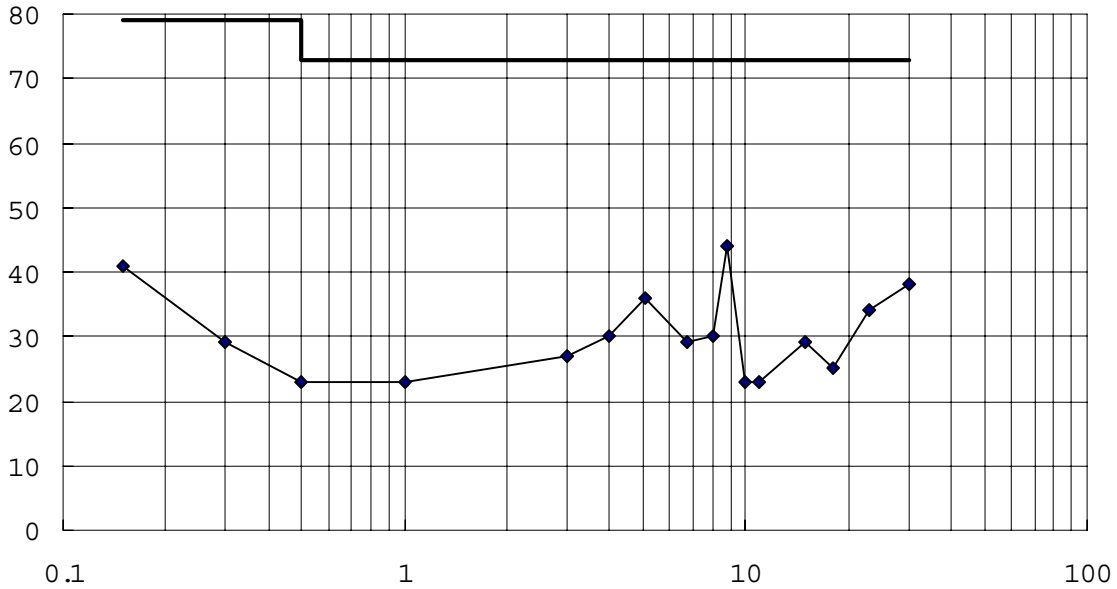
INV TECHNICAL SHEET

No.	item	title	unit
S-S5-01 (3/8)	EMC	EMC DATA	S500

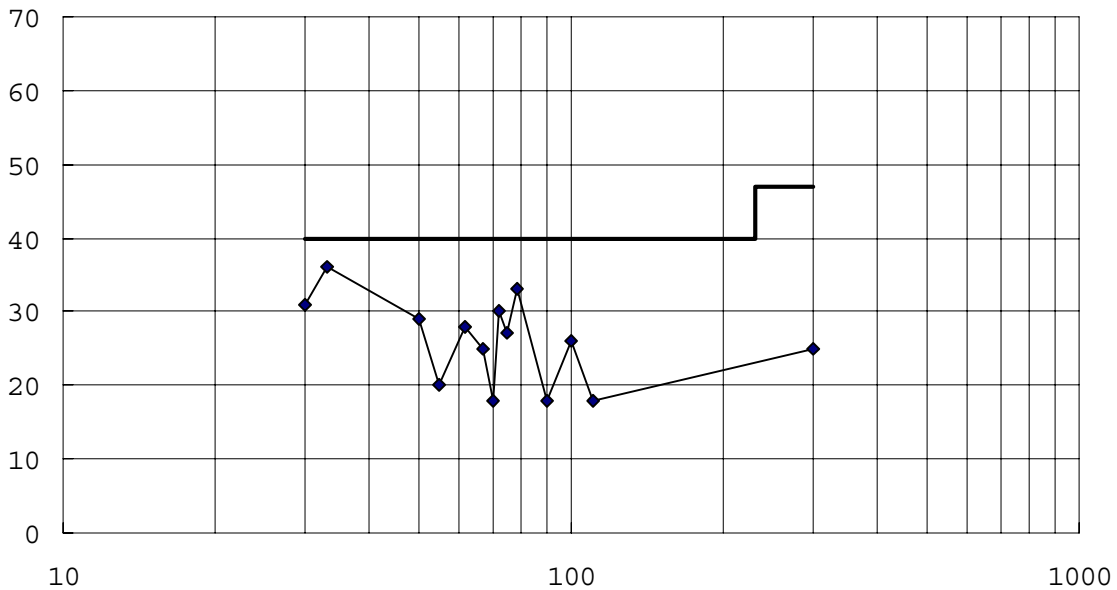
《Measurement Data》

• **FR-S520-0.2K + SF1306**

◎ Conducted Emission



◎ Radiated Emission (10m)



Date		
2000-6-15		

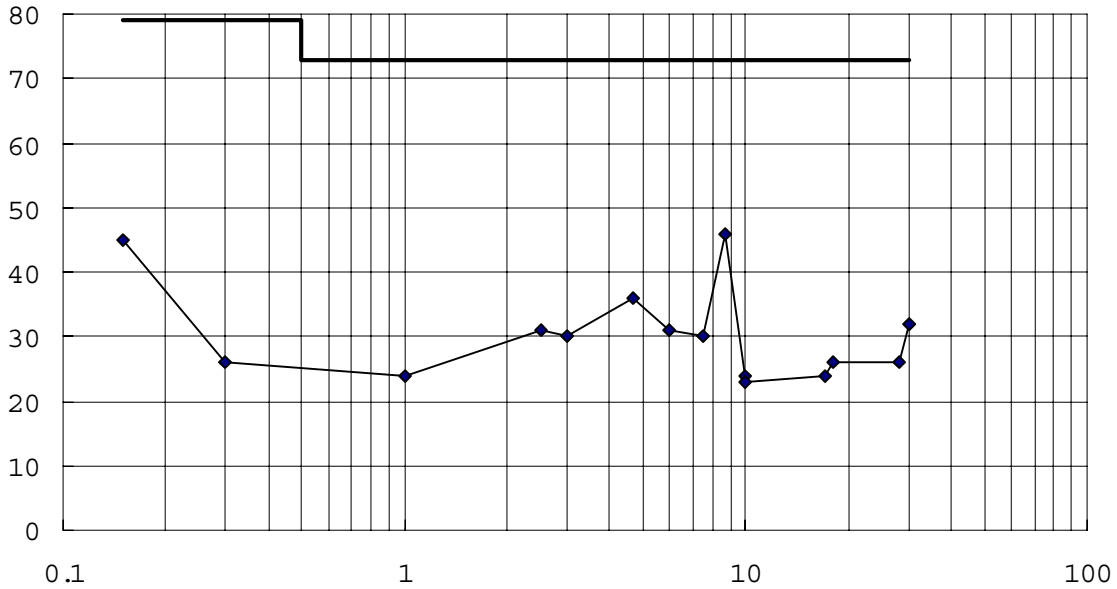
INV TECHNICAL SHEET

No.	item	title	unit
S-S5-01 (4/8)	EMC	EMC DATA	S500

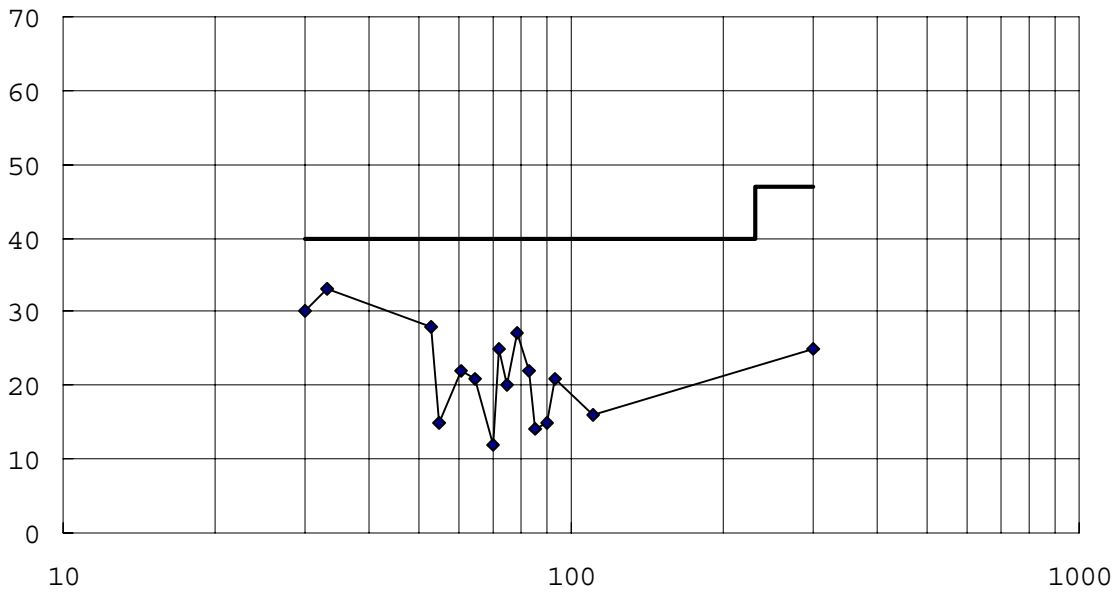
《Measurement Data》

• **FR-S520-0.4K + SF1306**

◎ Conducted Emission



◎ Radiated Emission (10m)



Date		
2000-6-15		

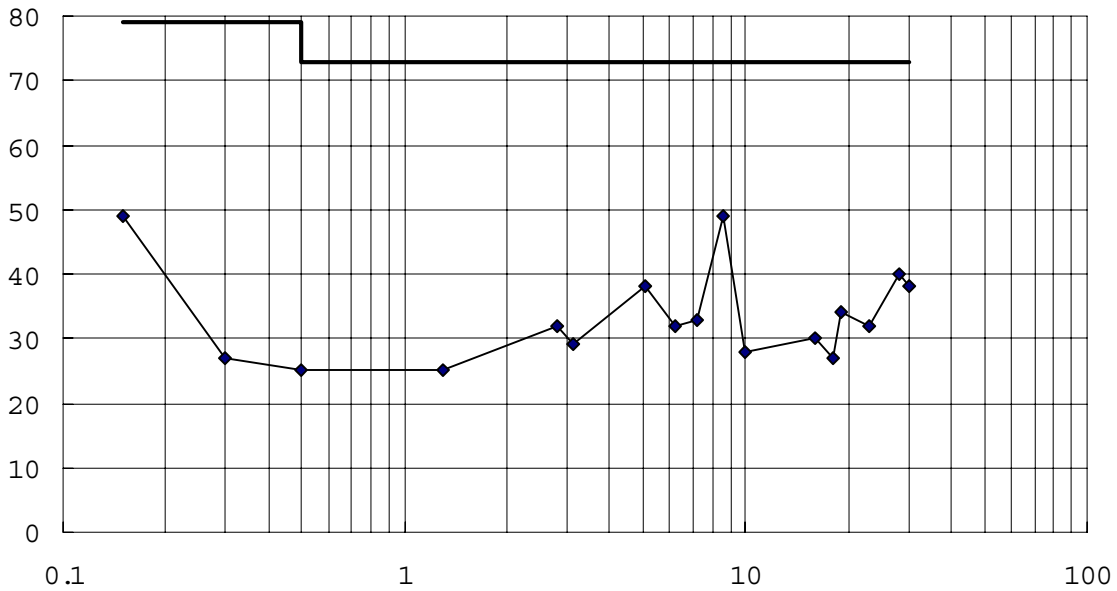
INV TECHNICAL SHEET

No.	item	title	unit
S-S5-01 (5/8)	EMC	EMC DATA	S500

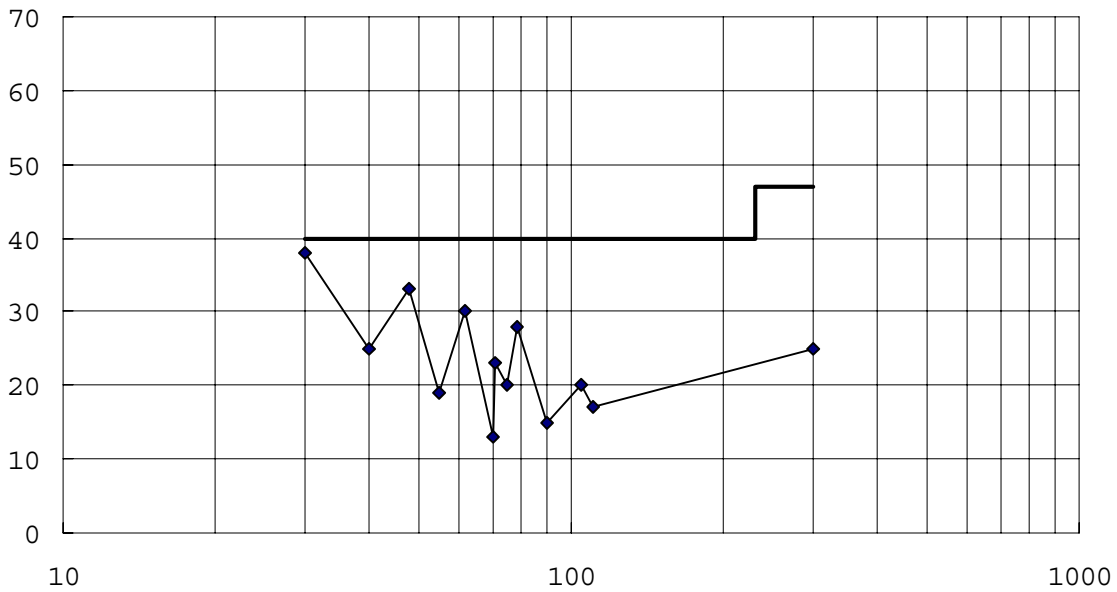
《Measurement Data》

• **FR-S520-0.75K + SF1306**

◎ Conducted Emission



◎ Radiated Emission (10m)



Date		
2000-6-15		

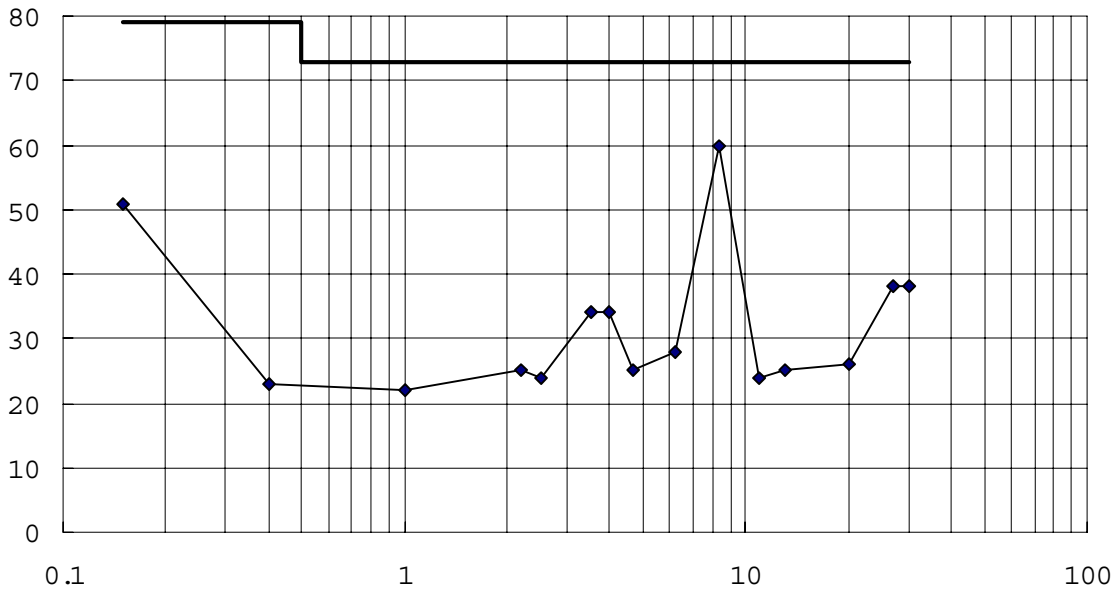
INV TECHNICAL SHEET

No.	item	title	unit
S-S5-01 (6/8)	EMC	EMC DATA	S500

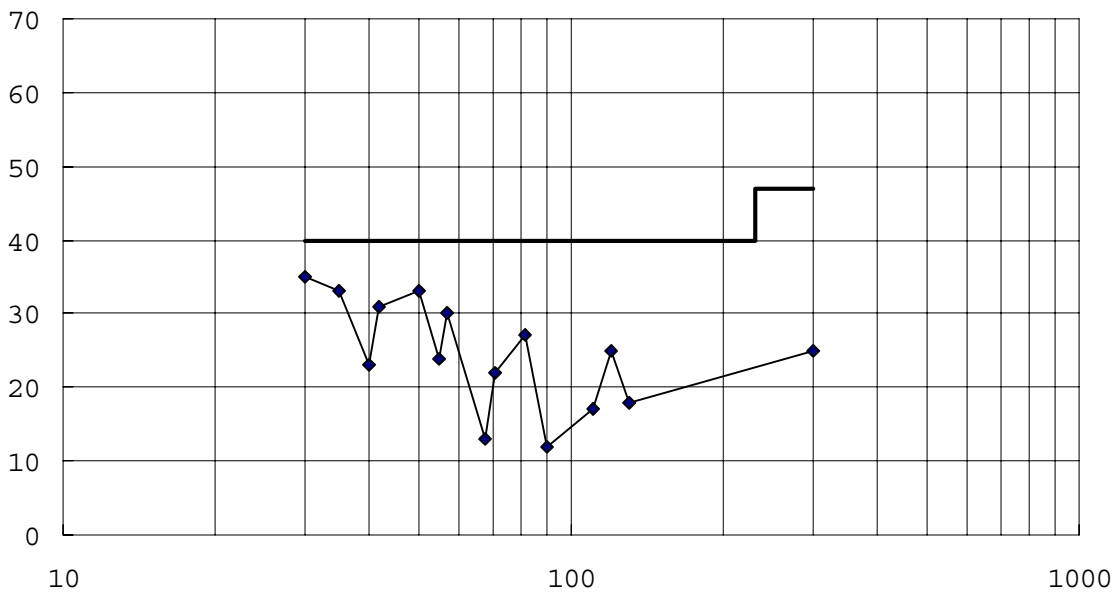
《Measurement Data》

• **FR-S520-1.5K + SF1306**

◎ Conducted Emission



◎ Radiated Emission (10m)



Date		
2000-6-15		

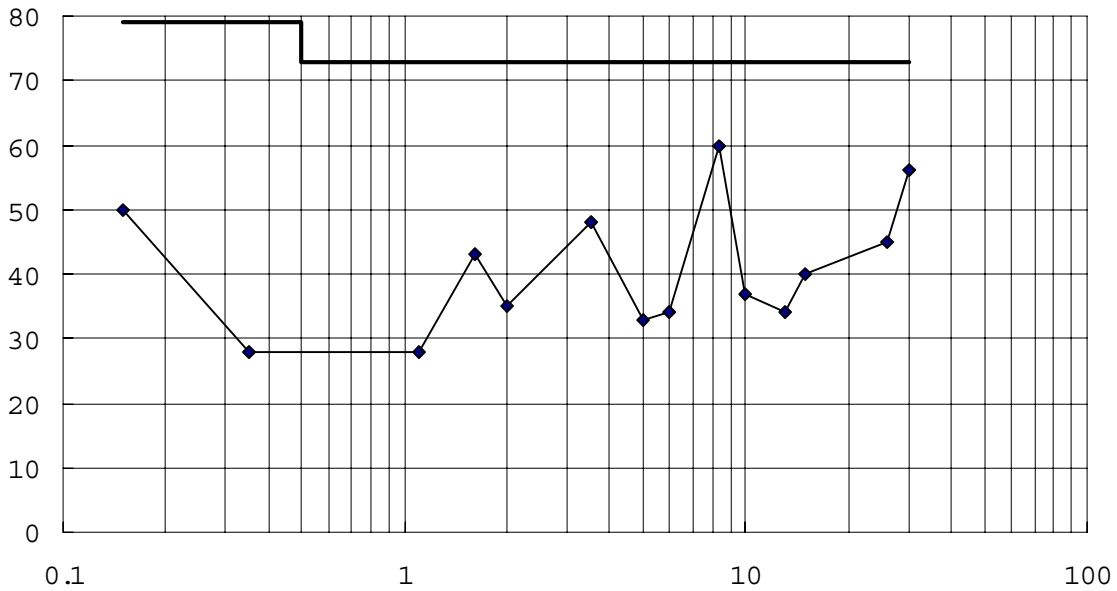
INV TECHNICAL SHEET

No.	item	title	unit
S-S5-01 (7/8)	EMC	EMC DATA	S500

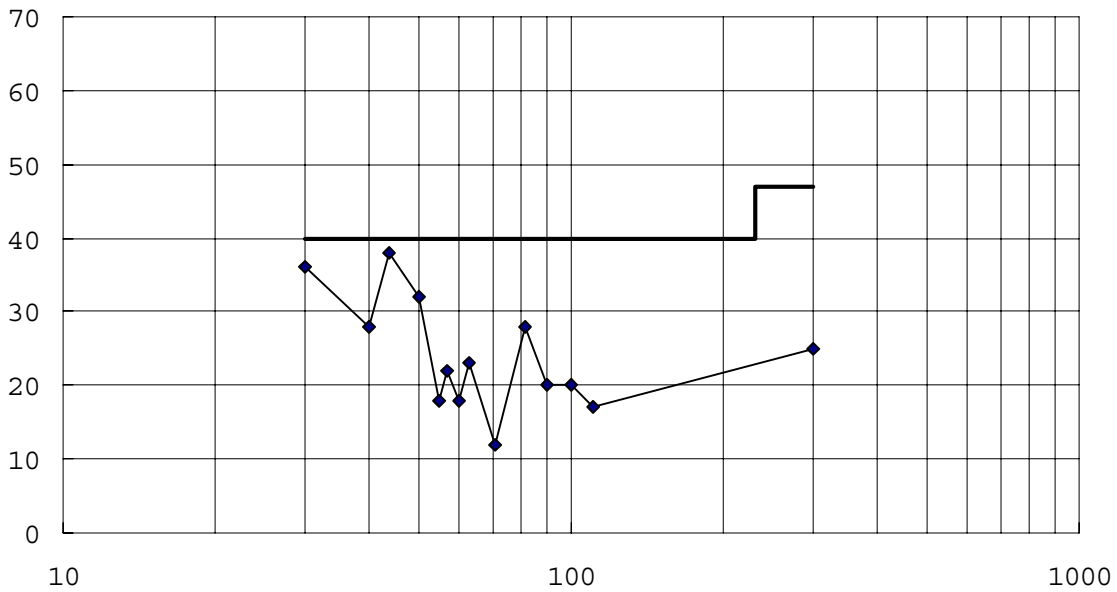
《Measurement Data》

• **FR-S520-2.2K + SF1309**

◎ Conducted Emission



◎ Radiated Emission (10m)



Date		
2000-6-15		

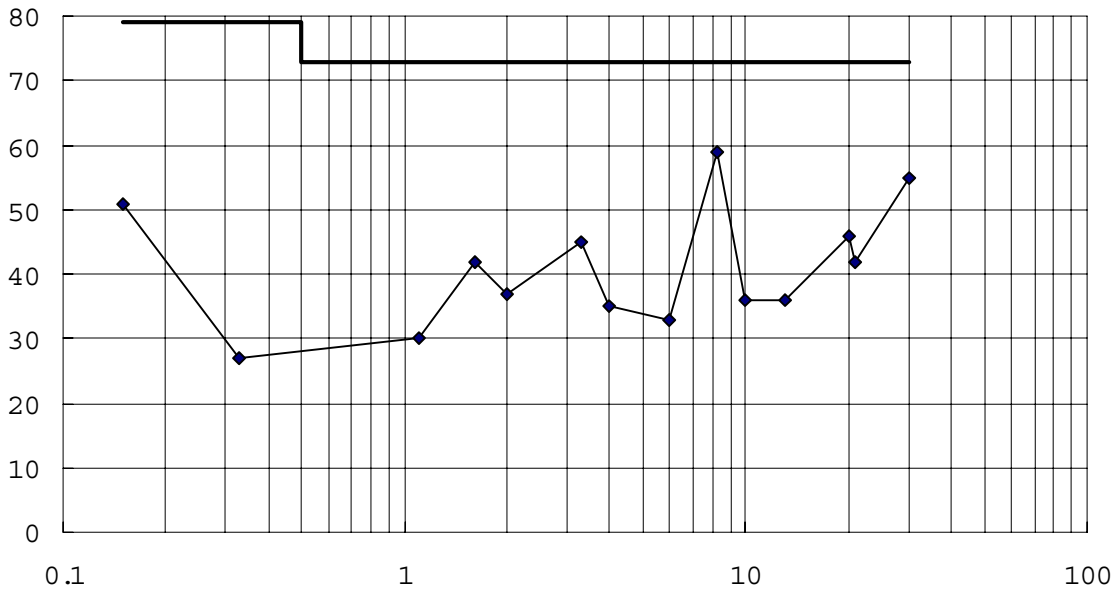
INV TECHNICAL SHEET

No.	item	title	unit
S-S5-01 (8/8)	EMC	EMC DATA	S500

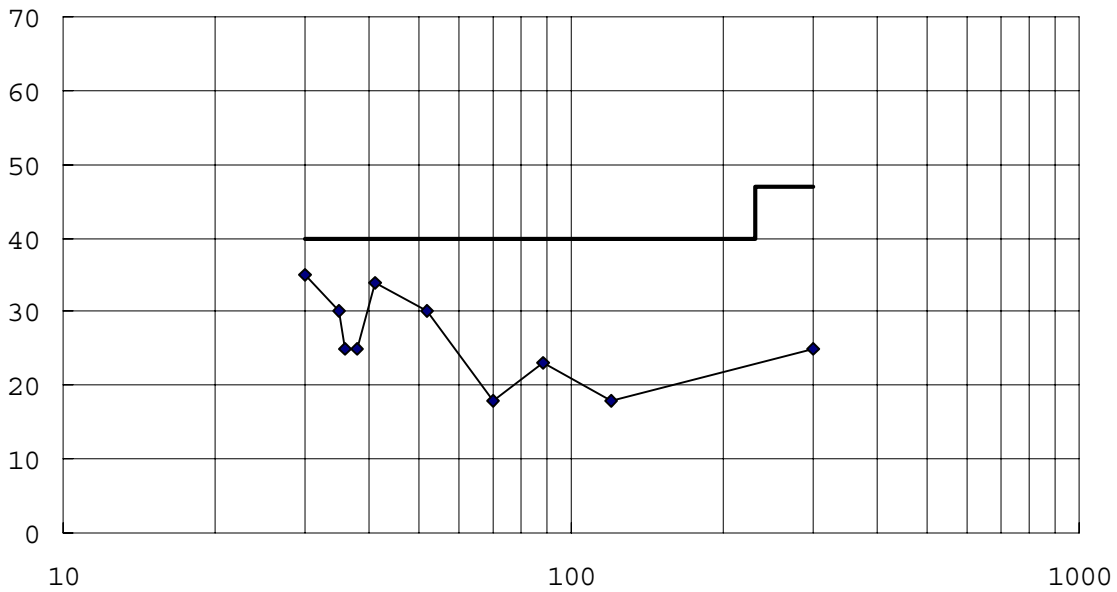
《Measurement Data》

• **FR-S520-3.7K + SF1309**

◎ Conducted Emission



◎ Radiated Emission (10m)



Date		
2000-6-15		